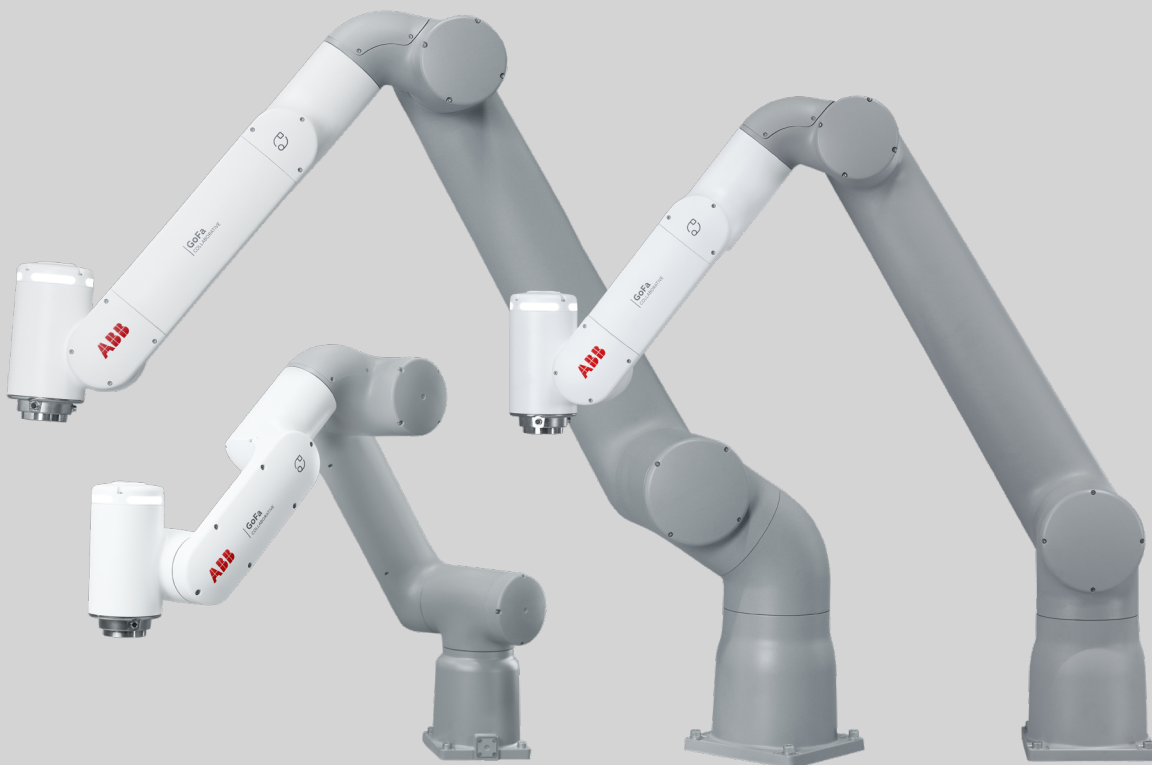


ROBOTICS

## GoFa™ CRB 15000

Go far with your new helping hand



Go faster. Go further than ever. GoFa's class-leading speed, safety, and ease of use will take your business to the next level.

### Introducing GoFa

GoFa incorporates a range of features that allow it to be used safely, directly alongside human workers and without the need to design and build bulky barriers or fencing. GoFa can continuously share workspace with people, giving it maximum flexibility and efficiency. Robot and human cooperate on the same tasks, without jeopardizing productivity or safety.

### Strong yet safe

Designed for handling payloads up to 12 kg, GoFa has integrated torque sensors in each of its six joints offering superior power and force limiting performance. Together, these prevent the risk of injury by bringing GoFa to an immediate stop if it senses any contact with a human worker.

### Easy set-up and operation

Set up and configuration is easy with intuitive, graphical Apps directly on the FlexPendant. You can move your robot using lead through in no time.

### Faster performance for greater productivity

GoFa offers a maximum Tool Center Point (TCP) speed of up to 2,2 m/s,<sup>1</sup> faster than other cobots in its class. GoFa can perform more operations in a set period than competing robots.

<sup>1</sup> Safe collaborative speed will be lower, refer to the SafeMove configurator App for recommendation. Always do a safety risk assessment of your cobot application.



## Key features:



### Collaborative safety

- Superior power and force limiting performance through integrated torque sensors,
- Safe design of robot, rounded geometry, no pinch/trap points,
- Safety certified Category 3, PL d.



### Productivity

- With a TCP speed of up to 2,2 m/s<sup>2</sup>, GoFa is faster than other cobots in its class,
- Up to 1,62 m reach, 14% longer than other comparable robots,
- Up to 20% energy savings,
- Best-in-class repeatability of 0,02 mm on the market.



### Applications

- Machine tending,
- Welding,
- Palletizing,
- Assembly,
- Screwdriving,
- And many more...



### Easy to use

- Enhanced interaction with arm side interface,
- Lead-through anywhere on the robot,
- Wizard easy programming,
- SafeMove configurator App on the FlexPendant.

<sup>2</sup> Safe collaborative speed will be lower, refer to the SafeMove configurator App for recommendation. Always do a safety risk assessment of your cobot application.

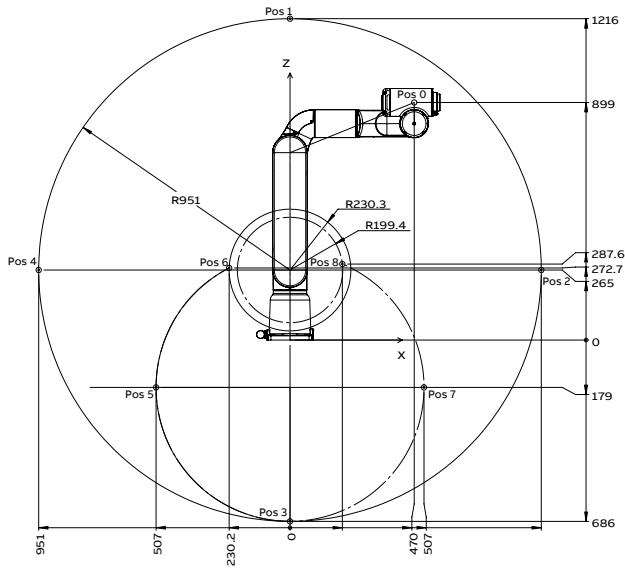
<b>Specification</b>			
	<b>GoFa 5</b>	<b>GoFa 12</b>	<b>GoFa 10</b>
Reach (mm)	950 (wrist) 1050 (flange)	1270 (wrist) 1370 (flange)	1520 (wrist) 1620 (flange)
Payload (kg)	5	12	10
Arm load (kg)	1 (mounted on axis 4)	1 (mounted on axis 2, 3, or 4)	1 (mounted on axis 2, 3 or 4)
Number of axes	6	6	6
Protection	IP54	IP67	IP67
Protection Class	ISO cleanroom 4	ISO cleanroom 4	ISO cleanroom 4
Mounting	Any angle, including table mounting, wall mounting, and ceiling mounting		
Controller	OmniCore C30		
Controller power needed to run the GoFa arm	100 – 230 VAC 50 – 60 Hz		
Customer power supply	M8, 3 pins connector, 24V/3A		
Customer signals	M8, 4 pins connector, CAT 5 cable, up to 4 digital signals, digital/analog IOs and Fieldbuses or Ethernet, Analog in, Analog out		
Tool flange	Standard ISO 9409-1-50		
Functional safety	SafeMove Collaborative included all safety functions certified to Category 3, PL d		
<b>Certifications</b>			
SGS Functional safety	ISO 10218-1:2011 and the applicable portions of ISO/TS 15066, ISO 13849-1:2015, IEC 60204-1:2016 The product is compliant with ISO 10218-1:2011 *for additional certifications see the manual		

<b>OmniCore™</b>			
	<b>GoFa 5</b>	<b>GoFa 12</b>	<b>GoFa 10</b>
Physical Controller Dimensions	C30 I 449x443x170 (WxDxH) mm   Weight 24kg		
Available Connections	V, A, Di in, DI out, Analog in, Analog out , Safety I/O ports		
Power requirements	100 – 230 VAC 50 – 60 Hz.		
Available Communication Protocol	TCP/UDP IP, RTU, Fielbuses: PROFINET Controller, PROFINET Device, PROFInergy, PROFIsafe Controller PROFIsafe Device, EtherNet/IP Scanner, EtherNet/IP Adapter, CC-Link IE FB Master, CC-Link IE FB Device DeviceNet c/d		

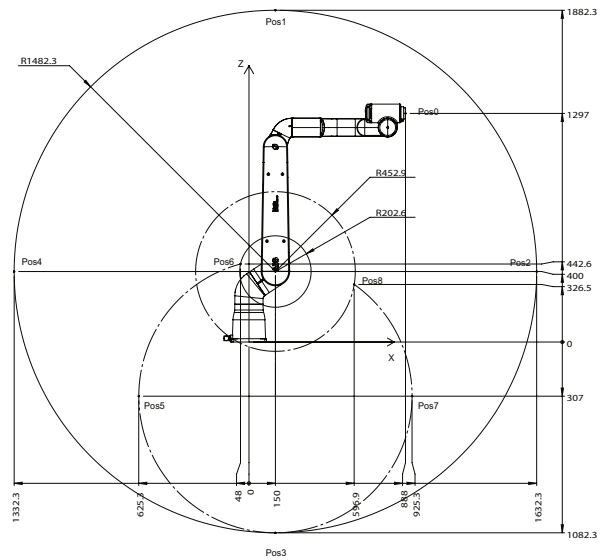
<b>Performance</b>			
	<b>GoFa 5</b>	<b>GoFa 12</b>	<b>GoFa 10</b>
Max TCP Velocity	2,2 m/s	2 m/s	2 m/s
Max TCP acceleration (Controlled motion for nominal load)	36,9 m/s <sup>2</sup>	27 m/s <sup>2</sup>	28 m/s <sup>2</sup>
Max TCP acceleration (e-stop for nominal load)	61,6 m/s <sup>2</sup>	79 m/s <sup>2</sup>	94 m/s <sup>2</sup>
Pose repeatability	0,02 mm	0,02 mm	0,02 mm

<b>Physical</b>			
	<b>GoFa 5</b>	<b>GoFa 12</b>	<b>GoFa 10</b>
Dimensions robot base	165 x 165 mm	200 x 200 mm	200 x 200 mm
Weight	28 kg	48 kg	51 kg

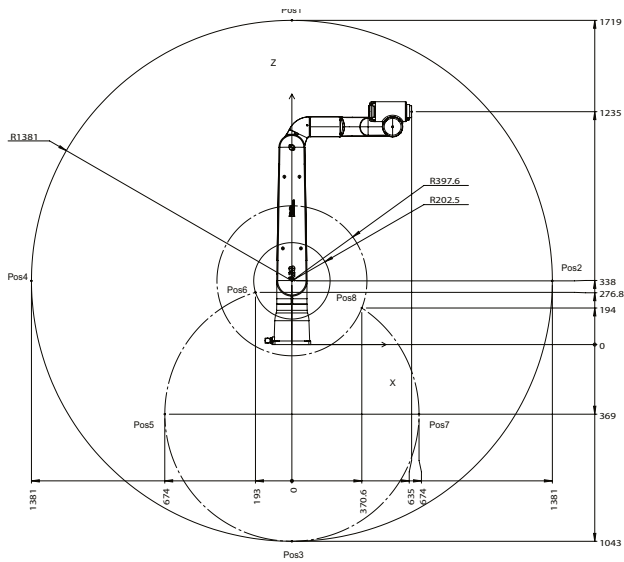
<b>Movement</b>						
	<b>GoFa 5</b>		<b>GoFa 12</b>		<b>GoFa 10</b>	
Axis movement	Working range	Axis max. speed	Working range	Axis max. speed	Working range	Axis max. speed
Axis 1 rotation	-180° to 180°	125 °/s	-270° to 270°	120 °/s	-270° to 270°	120 °/s
Axis 2 arm	-180° to 180°	125 °/s	-180° to 180°	120 °/s	-180° to 180°	120 °/s
Axis 3 arm	-225° to 85°	140 °/s	-225° to 85°	125 °/s	-225° to 85°	125 °/s
Axis 4 wrist	-180° to 180°	200 °/s	-180° to 180°	200 °/s	-180° to 180°	200 °/s
Axis 5 bend	-180° to 180°	200 °/s	-180° to 180°	200 °/s	-180° to 180°	200 °/s
Axis 6 turn	-270° to 270°	200 °/s	-270° to 270°	200 °/s	-270° to 270°	200 °/s



01 GoFa 5 Working range, Side view



02 GoFa 10 Working range, Side view



03 GoFa 12 Working range, Side view

We reserve the right to make technical changes or modify the contents of this document without prior notice. With regard to purchase orders, the agreed particulars shall prevail. ABB AG does not accept any responsibility whatsoever for potential errors or possible lack of information in this document.

We reserve all rights in this document and in the subject matter and illustrations contained therein. Any reproduction, disclosure to third parties or utilization of its contents – in whole or in parts – is forbidden without prior written consent of ABB AG. Copyright © 2023 ABB. All rights reserved.