

AUTOMATION SERIES

AS40

END DRIVE CONVEYORS

AS40 conveyors are end drive belt conveyors, the most common conveyor type thanks to their versatile and cost-conscious design. Automation Series conveyors are designed with you in mind, featuring a wide array of options that suit them for any application from robotic assembly and automotive to pharmaceuticals and packaged foods.

FEATURES AND BENEFITS

PIVOT DRIVES

Pivot Drives are unique to AS40 conveyors. They can be positioned at any point above or below the conveyor. When positioned below the conveyor, the belt is the highest point on the conveyor.

RIGID ALUMINUM FRAME

AS40 frames are designed to maintain alignment and prolong belt and bearing life. Frames 12" wide and under feature a sturdy single-piece box construction, while frames 18" and wider feature a rigid aluminum/steel frame.

TENSION RELEASE TAILS

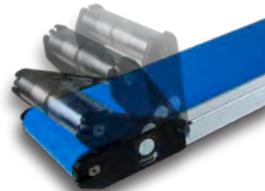
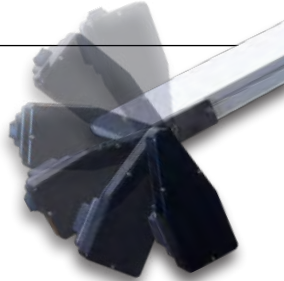
Tension Release tails flip up at the push of a button, releasing tension on the belt to allow the operator to clean under the belt in the event of spills. Tracking and tension settings are maintained when the tail is snapped back into place.

CROWNED PULLEYS

AS40 conveyors use crowned pulleys to take advantage of the natural tendency of belts to run centered on the longest part of the conveyor. V-guide belts are available for applications that require side-entering or -exiting.

URCAP

A free URCap allows AS40 Conveyors to be easily integrated with Universal Robots, allowing the robot to control start/stop, forward/reverse and choose between multiple speeds.



APPLICATIONS

Automation & Robotics

Assembly

Automotive

Metal Working

Material Handling

Pharmacy & Medical

Packaging

Marking & Coding

AS40 | Automation Series



5 DAY LEAD TIMES


Conveyors built with our most popular belt options qualify for our Quick Ship Program.



CONFIGURE AND QUOTE ONLINE 24/7

Engineer developed rules make sure all your components work together properly.

 **Width**
2-24"

 **Length**
up to 20'

 **Load**
up to
120 lbs

 **Speed**
up to
400 fpm